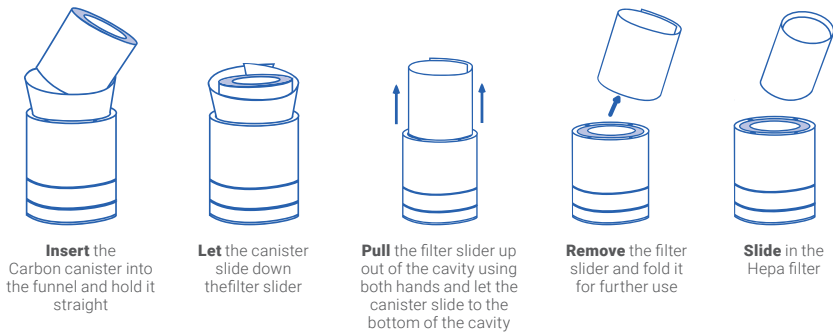
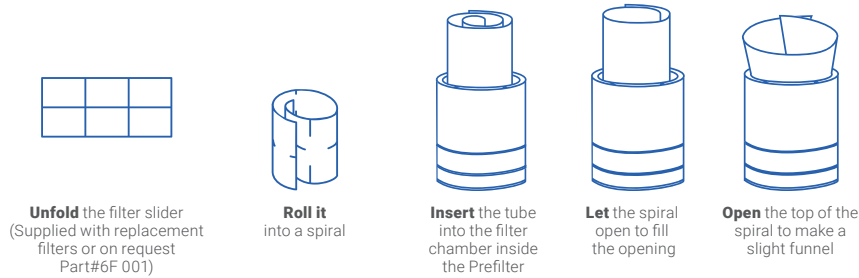
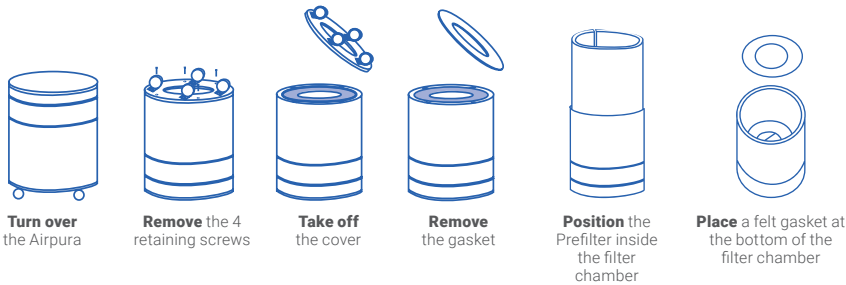
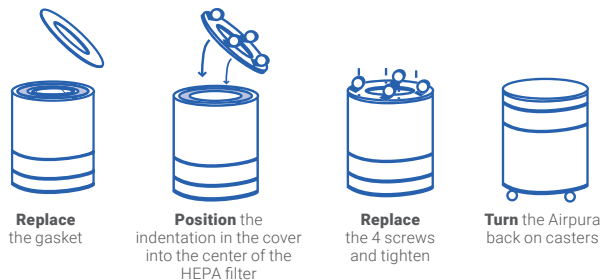


## To open the filter chamber



## To close the filter chamber



**Airpura**   
AIR PURIFIERS

# H600

OPERATING  
&  
FILTER REPLACEMENT  
DIRECTIONS

# TO BEGIN USING YOUR AIRPURA

**Inspect the exterior of your Airpura** to verify there is no damage from shipping. If any damage is noted, please follow the instructions from the distributor returns policy.

**Wipe the unit** with a damp cloth to remove any dust from packaging

**Plug the unit** into a regular grounded 110 volt outlet

**Turn on the unit** to MAX and allow it to run for at least 30 minutes

**Set the variable speed** control to the level you wish

The most efficient way to use your Airpura for regular air quality maintenance is to run it at a low speed **24 hours a day 7 days a week.**

**Always maintain a humidity level of 40% or less in your home to ensure the unit is operating at optimal levels. Overly humid conditions can have an adverse effect on the performance of the carbon. When using purifier with a dehumidifier, please keep dehumidifier at least 6 feet away.**



## FILTER MAINTENANCE AND REPLACEMENT

### The Prefilter

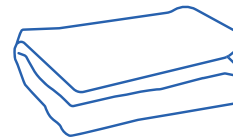
Can be vacuumed from the exterior of the unit once a month or more often. Should be replaced at least after 12 months of use

### To vacuum the Prefilter

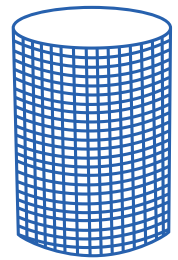
Use the brush attachment on your vacuum cleaner  
Vacuum slowly around the mesh surface of the filter chamber

## IMPORTANT SAFETY NOTE

Please ensure air purifier is turned OFF when plugging into a power source. Failure to do so may result in motor potentially stalling and/or burning.



**Poly Prefilter 600 2-pack**  
12 months



**HEPA 600RVHU Filter**  
(99.97% efficient @ 0.3 Microns)  
3 to 5 years



**Hi-C Carbon Weave**  
4-6 months

**H614: HEPA 14 Filter**  
(99.99% efficient @ 0.3 Microns)

## Technical specifications

### Particle removal

40 sq ft true HEPA  
(Measured 1 side only)  
7-12 pleats per inch  
Pleats warm rolled with separators

### Odor and chemical suppression

306 in<sup>2</sup> HI-C Carbon weave

### Air Flow 560 cfm

More cfm than any other home unit available

### Prefilter

570 in<sup>2</sup> x 1 in

### Housing

Powder coat steel

### Size

23 in x 15 in

### Weight

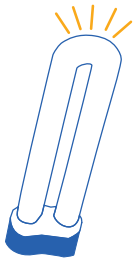
49 lbs total

### Watts

120 on high / 40 on low

### Sound Level at 6 feet

34.2 db on low  
57.2 db on high  
(Room Level 25.1)



## Air purifiers models and filter configurations

	Prefilter	Particulate	Carbon
<b>Alternates</b>	Cotton Prefilter TarBarrier Prefilter		
<b>Upgrade</b>		HEPA 14 Filter (99.99% efficient @ 0.3 Microns) ULPA Filter (99.9999% efficient @ 0.1 Microns)	18 lbs Impregnated carbon (100% Blend) 18 lbs Coconut Shell Carbon Filter (100% Blend) 18 lbs Impregnated Carbon Filter 17% KI/Potassium Iodide, 83% Coconut Shell Carbon)